

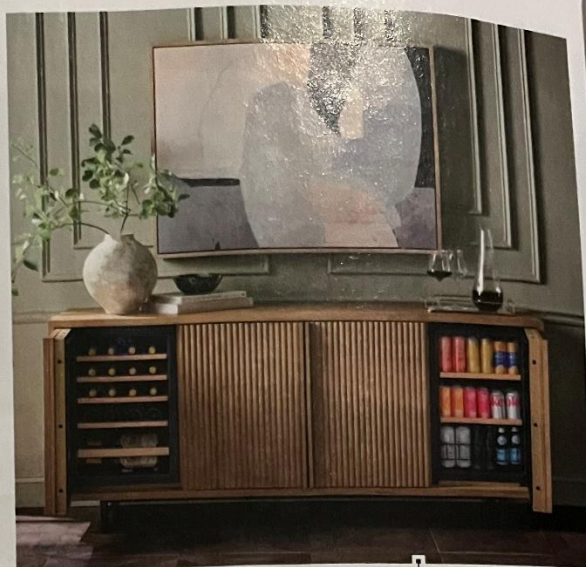
RAISE the BAR

From hidden refrigeration to wine racks that turn into wall art, these essentials elevate any home beverage bar.

BY SANDI SCHWARTZ

There's a new trend taking over empty corners and spare counterspace in today's homes: the beverage station. More than a mere bar cart or dedicated drawer, these endlessly customizable creations are all-encompassing service stations, often with ice machines, small refrigerators and even dishwashers.

If you've found yourself tempted by the pebble ice maker craze or dreamed of converting an underused cabinet into a wine fridge, you're not alone. According to an emerging trend report by Houzz, searches for products like beverage and wine fridges and small wet bars are up. Just a few small additions are all you need to achieve an accessible, compact and visually appealing drink setup, perfect for entertaining or just enjoying a quiet evening at home. We've gathered some of the very best beverage-center finds on the market so you can raise the bar in your own home.



Functional Furniture

The Touraine Reeded Sideboard works double-duty, perfect for small(er) spaces. Crafted from solid oak with a modern bleached finish and black iron accents, it offers customizable, cooling storage plus a center cabinet with an adjustable shelf for barware, glassware and accessories. Given its easy, one-plug installation, no assembly is required. wineenthusiast.com



Wood Paneling with Wine Storage

Showcase your wine collection as well as your sense of style. Contemporary wall panels by Slatpanel can transform blank walls into perfect bar-cart backdrops. The addition of these easy-to-install wine racks boost the functionality of the wall, making it simple to grab your favorite wine when the moment strikes. thewoodvenerhub.com



Seltzer with Sustainable Sensibilities

Seltzer has gained a reputation as a healthier alternative to soda — now it can be better for the planet too. Mysoda's Glassy sparkling water maker's minimalistic design includes a body made of renewable wood-based composite with solid aluminum details and parts. Enjoy effortless carbonation with state-of-the-art technology and elegant glass bottles. mysoda.eu or amazon.com



Truly Cool Refrigeration

Turn heads with a mod take on the mini-fridge. The Super Smart Fridge is ultra quiet with dual temperature zones and a high-end compressor (the same used by Sub-Zero). Available in seven bold color choices, this fridge fits all can and bottle sizes given its modular shelving with reversible racks. With a matching tray included, it's one appliance you'll certainly want on display. roccofridge.com



A Design-Forward Dishwasher

Spend more time enjoying your beverages, and less time cleaning up after. CAFÉ's Dishwasher Double Drawer cleans quickly, and the Eco-Cycle setting is designed to use less energy and water. This sleek dishwasher is also customizable, so you can combine any of the premium finishes and hardware to create a look as custom as your log or timber home. cafeappliances.com